

# Preference®

Dental cabinetry to refine your operator

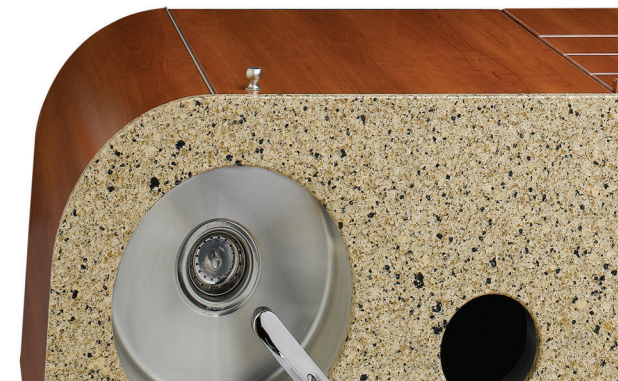


# Preference<sup>®</sup> by A-dec<sup>®</sup>

Dental cabinetry should do more than store ancillaries and supplies. It should increase productivity, streamline workflow and save precious time. Designed specifically to be an integral part of a total operator management system, Preference by A-dec makes it all possible.

A-dec has worked with the dental community creating solutions that make your job more efficient and less strenuous for more than 50 years. Our dental cabinetry is no exception. It's easy to clean. Built to withstand the unique demands of an operator. And requires no twisting or turning to reach ancillaries. Every precise detail is the result of hours of research and collaboration with the goal of boosting productivity and ensuring reliability. Just like our equipment, we stand behind our cabinetry well after it's been installed in your operator. And just like our equipment, we're always reengineering features to improve usability; like changed latches, updated colors, reduced solid surface and countertop thicknesses (2 cm), and darkened cabinet subbases. We've also added the option of exquisite, easy-to-maintain quartz countertops.

Fresher. Sleeker. More modern. Now there are even more reasons to refine your operator with Preference. We invite you to sit down with your local, authorized A-dec dealer to discover what Preference can do for you. If the standard Preference Collection<sup>®</sup> or the Preference ICC<sup>®</sup> dental cabinetry choices don't precisely fit, we'll work with you to create a solution that does. After all, if it's not Preference by A-dec, it's just cabinetry.







Preference Collection  
5580 treatment console with soffit extension



**SWING-OUT SHELVES**  
Rotate toward the operator for easy access to equipment.



**EQUIPMENT DRAWER**  
Delivers ancillary devices right where you need them.

# Treatment consoles

Everything in its place and a place for everything. That's exactly what you get with the Preference Collection 5580 treatment console. With a redesigned midsection, we've streamlined the appearance and functionality. With the center partition removed, we've opened up the usable space to accommodate a variety of larger ancillary devices. We've also increased the capacity of the wire chase making it easier to run cables or utilities through the cabinetry without cutting additional holes.

Think about how you work. What equipment do you use now, and what do you see yourself using in the future? (See ancillary checklist.) Imagine yourself at your optimal performance. What does that look like? When creating a system that meets your specific needs, think about where you look for your equipment and what instinctively feels natural. With these considerations in mind, you'll be well on your way to creating a streamlined environment that works the way you do.



**ADJUSTABLE GLASS SHELVES**  
Accommodate different-sized tubs, trays, and cassettes.



**ICV®**  
Simplifies vacuum-line cleaning in 3 easy steps.

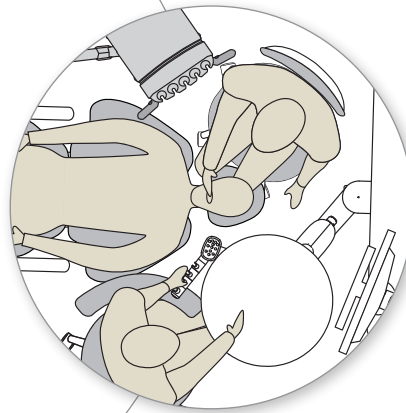


**CLOCK TIMER**

The refreshed clock timer matches the color and appearance of the new A-dec 300 and revamped A-dec 500 product lines, yet keeps the same functionality.

The 5580 is built to work. Storage options bring equipment within arms' reach of you and your assistant. Everything is right there at your fingertips, including your round worksurface, so there's no stretching or straining to reach what you need. And, with pass-through storage options, you get a treatment console that creates a natural flow of materials into and out of the operator.

Think about the ideal environment to best serve you and your staff and ask yourself, isn't it time your space accommodated you instead of the other way around?



**PRODUCTIVITY AT 12 O'CLOCK**

From 12 O'clock, everything is within reach. Preference Collection cabinetry is designed so you can reach everything you need with minimal movement.



**MONITOR TRACK MOUNT**

Slides back and forth to provide exceptional monitor positioning.

# Ancillary checklist

What equipment do you use now? What do you see yourself using in the future?

|                             | Current                  | Future                   |
|-----------------------------|--------------------------|--------------------------|
| 1. Amalgamator              | <input type="checkbox"/> | <input type="checkbox"/> |
| 2. Curing Light             | <input type="checkbox"/> | <input type="checkbox"/> |
| 3. Analgesia                | <input type="checkbox"/> | <input type="checkbox"/> |
| 4. CPU/Keyboard/Mouse       | <input type="checkbox"/> | <input type="checkbox"/> |
| 5. Digital X-ray            | <input type="checkbox"/> | <input type="checkbox"/> |
| 6. Trays/Cassettes          | <input type="checkbox"/> | <input type="checkbox"/> |
| 7. Tubs                     | <input type="checkbox"/> | <input type="checkbox"/> |
| 8. Call System              | <input type="checkbox"/> | <input type="checkbox"/> |
| 9. Intraoral Camera         | <input type="checkbox"/> | <input type="checkbox"/> |
| 10. View Box                | <input type="checkbox"/> | <input type="checkbox"/> |
| 11. Glove Dispenser         | <input type="checkbox"/> | <input type="checkbox"/> |
| 12. Electrosurge            | <input type="checkbox"/> | <input type="checkbox"/> |
| 13. Scaler                  | <input type="checkbox"/> | <input type="checkbox"/> |
| 14. Pulp Tester             | <input type="checkbox"/> | <input type="checkbox"/> |
| 15. Micro-Etcher            | <input type="checkbox"/> | <input type="checkbox"/> |
| 16. Prophy Jet              | <input type="checkbox"/> | <input type="checkbox"/> |
| 17. Electric Handpiece      | <input type="checkbox"/> | <input type="checkbox"/> |
| 18. Loops                   | <input type="checkbox"/> | <input type="checkbox"/> |
| 19. Dispensing Unit         | <input type="checkbox"/> | <input type="checkbox"/> |
| 20. Polaroid/Digital Camera | <input type="checkbox"/> | <input type="checkbox"/> |
| 21. Apex Locator            | <input type="checkbox"/> | <input type="checkbox"/> |
| 22. Fiber Optics            | <input type="checkbox"/> | <input type="checkbox"/> |
| 23. Tissue Dispenser        | <input type="checkbox"/> | <input type="checkbox"/> |
| 24. DVD/VCR                 | <input type="checkbox"/> | <input type="checkbox"/> |
| 25. Arc Lamp                | <input type="checkbox"/> | <input type="checkbox"/> |
| 26. Headphones              | <input type="checkbox"/> | <input type="checkbox"/> |
| 27. GP Gun                  | <input type="checkbox"/> | <input type="checkbox"/> |
| 28. Perio Charting          | <input type="checkbox"/> | <input type="checkbox"/> |
| 29. Vacuum Line Cleaning    | <input type="checkbox"/> | <input type="checkbox"/> |



**UNDERMOUNT STAINLESS STEEL SINK**  
Allows you to quickly and thoroughly wipe down the countertop.

**FOOT ACTIVATION**  
Promotes infection control by eliminating a touch point.

**SOFT-CLOSE**  
Gain the ease of doors and drawers gently opening and pulling themselves shut.

**CUP AND TOWEL DISPENSER**  
Offers hidden, convenient access to cups and towels.

**CPU STORAGE**  
Features a vent and USB powered fan for increased ventilation.

Preference Collection 5543 tall central console

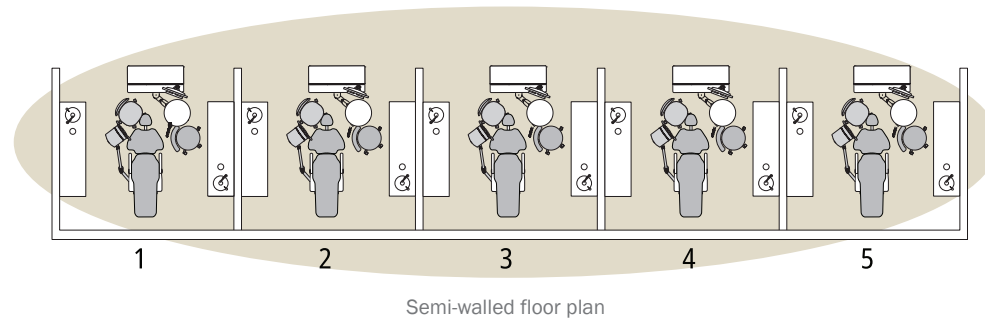


# Central consoles

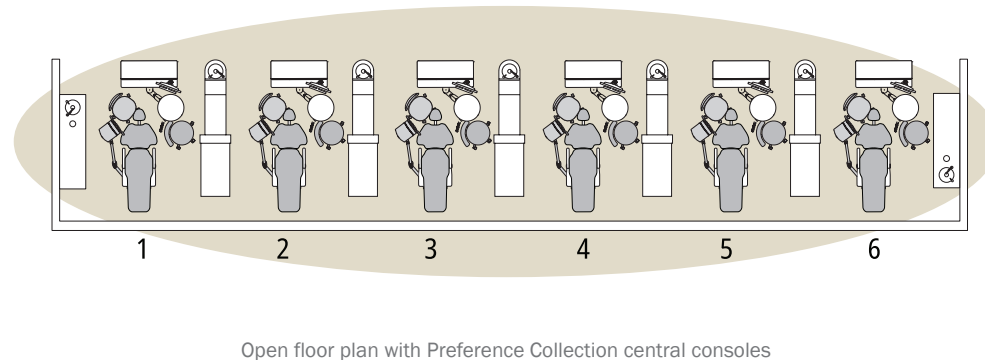
Increase efficiency, get the most out of your space, and save money. It's easy thanks to the Preference Collection 5543 central console.

**Did you know?**  
If you ever move offices, you can take Preference cabinetry with you—it's moveable and resellable.

Where there were once five treatment rooms, you can now fit six. In an open floor plan, our central consoles create a functional wall that allows you to share equipment, utilities, and a wash station between two treatment rooms. So, you not only save space, you reduce equipment expenses. And, if privacy is a concern, the 95" tall central provides an ideal solution.



Save enough space to add another treatment room using Preference Collection central consoles.





Preference Collection  
5730 dispensing unit

Preference Collection  
5731 storage unit



**EQUIPMENT DRAWERS**  
Offer excellent access to  
equipment and supplies.



**SOLID SURFACE SINK AND WASTE DROP**  
Add a professional look and  
simplify cleaning.





# Accessory consoles

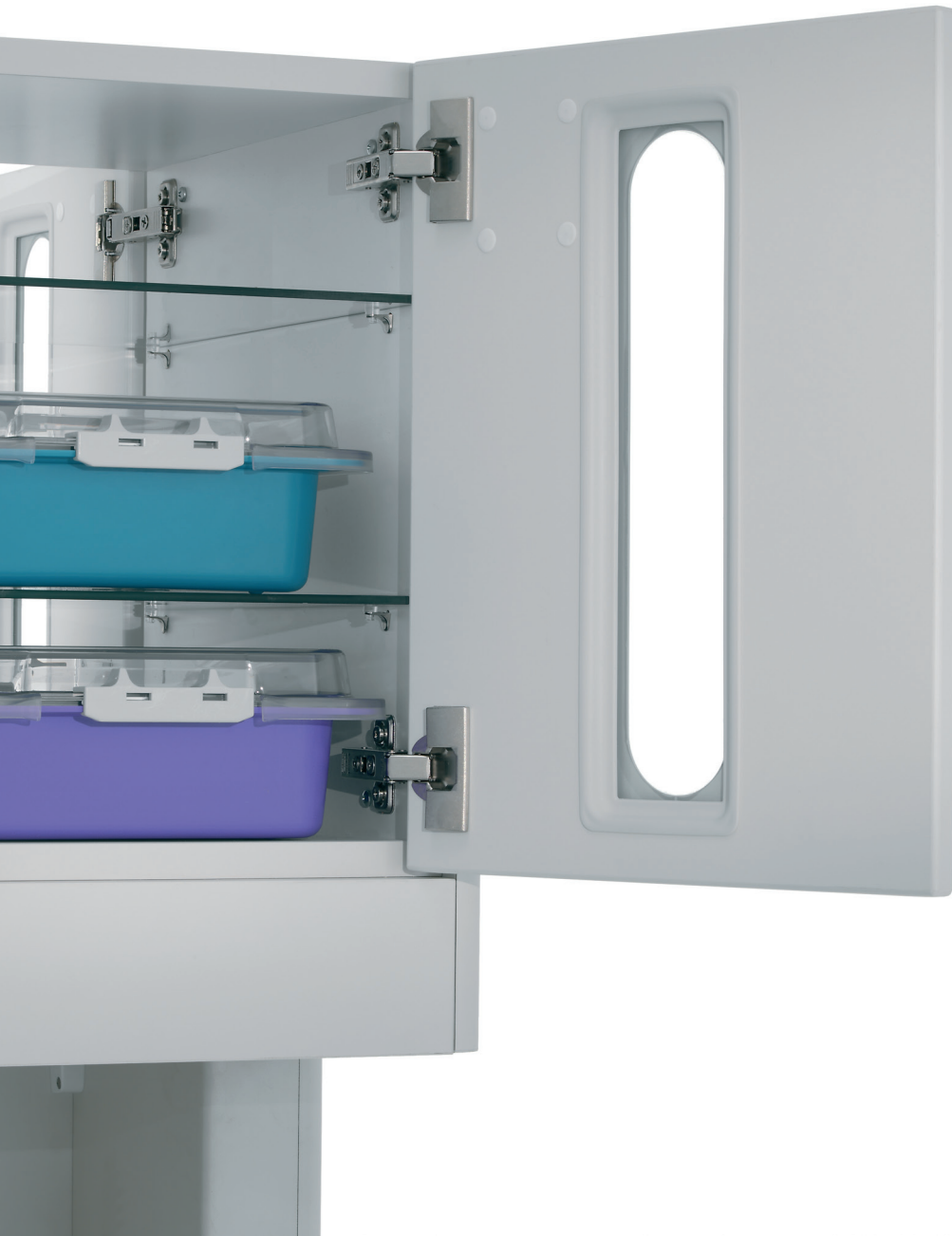
In a fixed- or semi-walled floor plan, Preference Collection accessory consoles offer an abundance of storage, wash station, and delivery system options. Equipment and materials are well organized and easy to reach. The rounded and angled countertops allow clear access into the treatment room. Preference Collection upper storage and dispensing units keep cups, towels, and masks discreetly stored, creating a patient-friendly environment.



## Did you know?

With built-in features such as task lighting, hospital-grade UL-listed electrical outlets, lead lining, sinks and faucets, Preference cabinetry can greatly reduce construction costs.

Preference Collection  
5531 accessory console

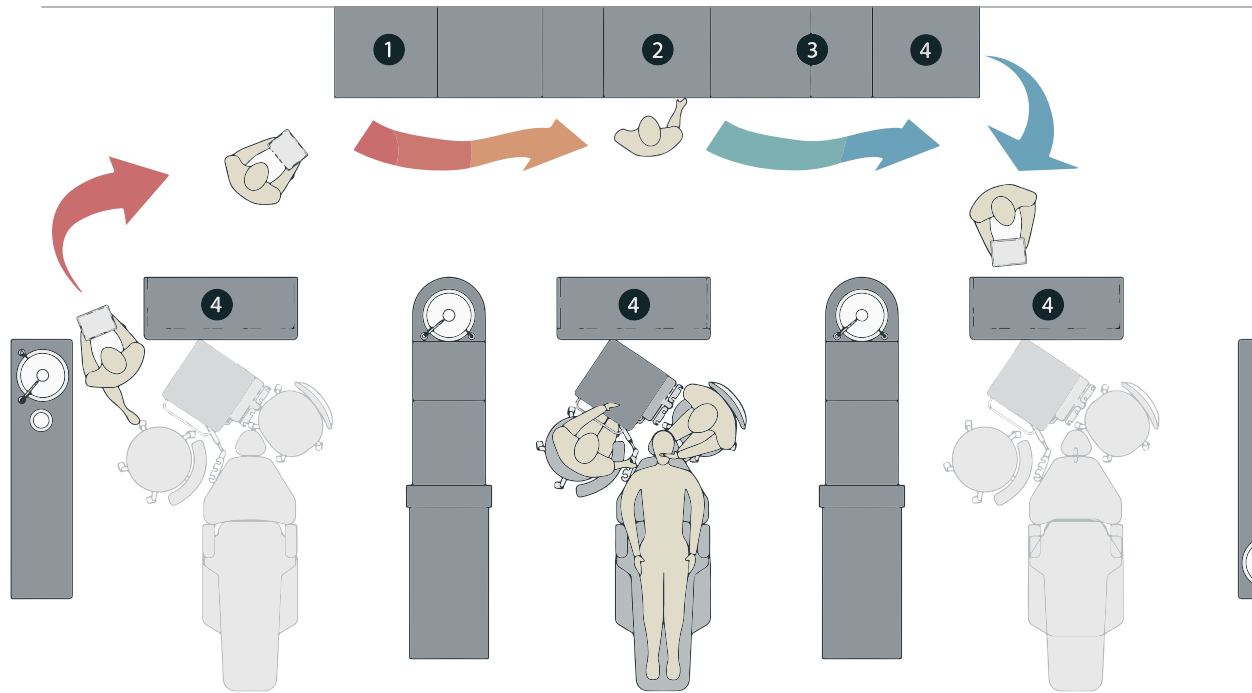


# Materials management

Have you thought about what a streamlined flow of materials in and out of the treatment room could do for you? When you have an efficient materials management system in place, workflow becomes quick, consistent, and natural. Everything you need for a procedure is ready for you when you need it—every time. This is possible with a central storage system that combines both the Preference ICC sterilization center and the Preference Collection 5580 treatment console.

In this streamlined process, materials and instruments are loaded directly from Preference ICC into tubs and trays or cassettes. Then your dental team delivers them to the 5580 storage shelves and takes the used materials back to the sterilization center. For the ultimate in efficiency, the 5580 pass-through option allows your staff to collect finished materials and replace them with fresh ones without disturbing procedures in the treatment room.





### Did you know?

Studies have shown that six minutes are lost every time an assistant leaves the operating room. If he or she leaves the room ten times a day, that's 60 minutes: The equivalent of one patient time slot. Think what you could accomplish by gaining just 10 percent more time in your day.



# Excellence is in the details

Sure a custom cabinetmaker or contractor can build storage cabinets for you. But in the operator, you have specific needs. A-dec has listened to doctors tell us what's most important to them for more than four decades. The result is dental cabinetry built specifically for the way you work—right down to the last detail.

**Asepsis.** The seamless blend between the solid surface sink and countertop, all the way to the backsplash, won't collect dirt to further simplify cleaning. Knee- or foot-activation systems allow you to turn faucets on and off without using your hands. And with new soft-close doors and drawers, you not only reduce potential touch points, but you're assured everything opens and closes with smooth, firm ease.

**Reliability.** A-dec cabinetry withstands the daily rigors of an operator. Radiused edgebanding seals and protects the edges of doors and drawers, while pretreated, heavy-gauge steel subbases resist rust and corrosion.

**Flexibility.** Storage options such as slide-out shelves, interior drawers, and swing-out shelves position to accommodate new ancillary equipment. Thin, strong tempered glass shelving allows for nearly any size tub, tray, or cassette and cleans easily.

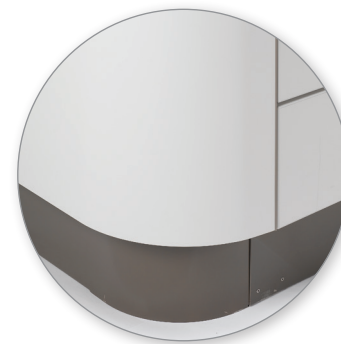
Details like these do more than increase efficiency and protect your investment. They allow you to focus on what really matters: Your patients.



**SOLID SURFACE COVERED BACKSPASH**  
Cleans easily and won't collect dirt.



**UNDERMOUNT SOLID SURFACE SINK**  
Simplifies cleaning.



**LESS VISIBLE SUBBASE**  
While the long-lasting heavy gauge steel subbase is still rust and corrosion resistant, the darkened color is more aesthetically pleasing and less visually intrusive. It blends right in.



**ROUNDED-END MODULES**  
Eliminate sharp corners and streamline cleaning.



**Did you know?**

The cost of including cabinets in your lease over time is far more expensive than buying them outright, and you own them in the end.



# Create a beautiful finish

Good use of color creates a mood and keeps the room visually balanced. When it comes to style, no two practices are exactly the same. No matter what combination you choose from our broad palette of laminate and solid surface colors, including our new quartz collection, Preference Collection ensures a functional, beautiful operator for years to come. If there's something you don't see in our Preference line, we can develop a solution just for you with Preference Custom.

Like what you've seen? For a closer look, order upholstery, laminate, solid surface, and quartz color samples from the *A-dec Inspire Me Tool* at [a-dec.com](http://a-dec.com). Your local A-dec dealer can help you discover how easy it is to create a professional, aesthetically pleasing operator from start to finish.

## **Did you know?**

Just like dental equipment, dental furniture is considered capital equipment and can be eligible for a Section 179 tax deduction.



#### A-dec Headquarters

2601 Crestview Drive  
Newberg, Oregon 97132 USA

P: 1.800.547.1883 within USA/CAN

P: +1.503.538.7478 outside USA/CAN

F: +1.503.538.0276

[a-dec.com](http://a-dec.com)

#### A-dec Australia

P: 1.800.225.010 within AUS

P: +61.(0)2.8332.4000 outside AUS

#### A-dec China

P: 400.600.5434 within CN

P: +86.571.89026088 outside CN

#### A-dec United Kingdom

P: 0800.233285 within UK

P: +44.(0).24.7635.0901 outside UK

## A complete solution

At A-dec, we offer more than chair seating that balances patient comfort and operator access. Or a delivery system with exceptional integration. We offer a complete solution. When you add A-dec Preference Collection dental cabinetry to your operatory, you get cabinetry that's designed to increase efficiency and built to accommodate you and how you work.



The composite wood products we use in our Preference Collection cabinetry complies with TSCA Title VI formaldehyde emission standards. These composite wood products are also certified as Environmentally Preferable Products (EPP) by the Composite Panel Association (CPA).

The colors and products shown may vary from the actual materials and are subject to change without notice. Please see your authorized A-dec dealer for accurate color samples and the most current product information.

©2021 A-dec Inc. All rights reserved.  
85.6142.00/2k/BB/7-21/Rev G

  
reliablecreativesolutions