

A-dec® Universal Light

INSTALLATION GUIDE



Product Models and Versions Covered in this Document

Models	Versions	Description
378L/578L	A	Dental Light

Before You Begin

Check with local building and code authorities about installation requirements specific to your location.

Recommended Tools

- Hex key set
- Phillips head screwdriver
- Socket wrench set
- Lubriplate™



WARNING Failure to turn off or disconnect the power before you begin this procedure can lead to product damage and result in serious injury or death.



ATTENTION Circuit boards are sensitive to static electricity. Electrostatic Discharge (ESD) precautions are required when touching a circuit board or making connections to or from the circuit board. Circuit boards should be installed only by an electrician or qualified service person.



Prepare the Mount and Transformer



NOTE The A-dec 578L can be mounted in both the single unit and dual unit bases. The A-dec 378L can be mounted only in the single unit base.

1. Remove the light base from the packaging.



NOTE Extra power cables are included for powering a simulator or lab control that does not have its own power supply (providing a 24 VAC connection).



WARNING Shock hazard. When you remove or replace the covers, take care not to damage any wiring or tubing. Verify that the covers are secure after you replace them.

2. Use a Phillips head screwdriver to remove the four screws from the light base covers.



Single Simulator Unit Light Base Cover

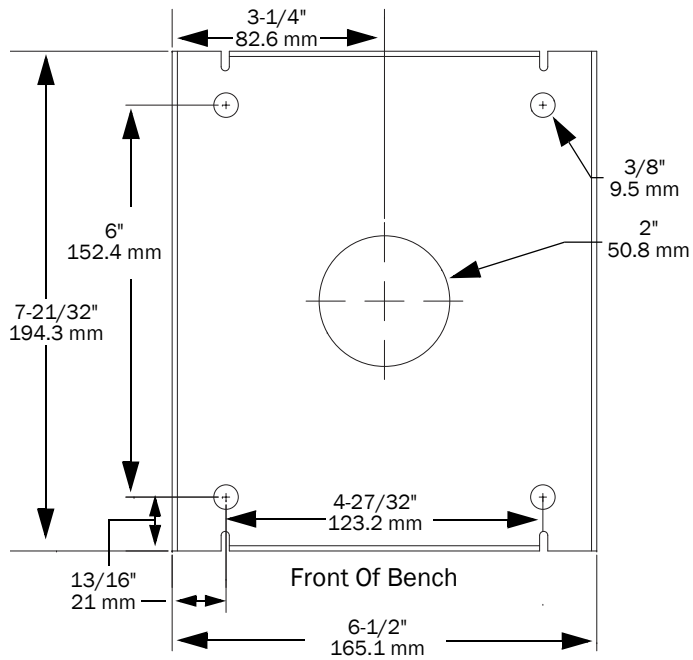


Dual Simulator Unit Light Base Cover

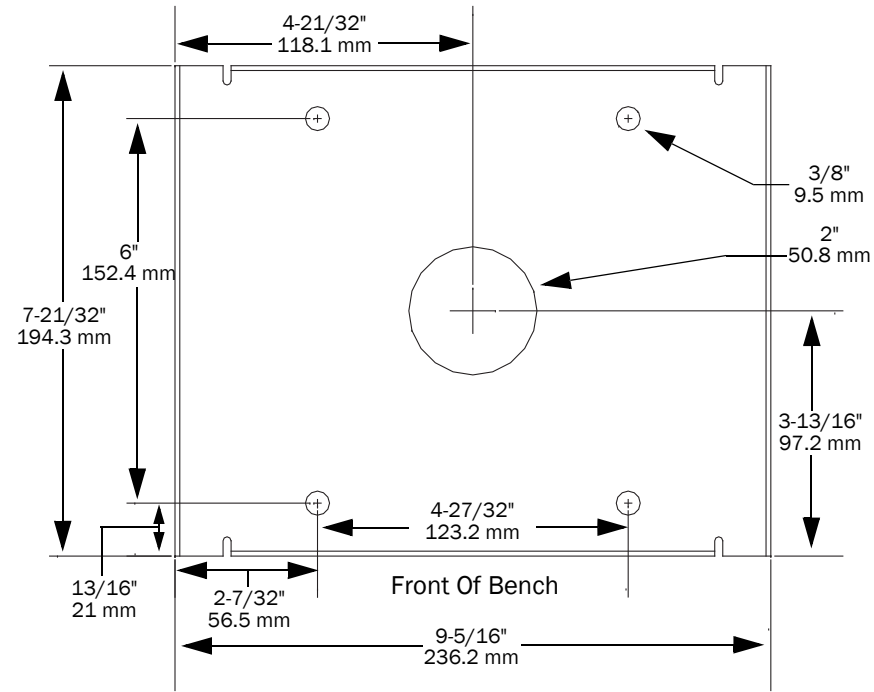
Install the Light Base

If the bench top does not have holes for the light base:

1. Refer to the diagrams below to prepare the bench top for the light base.



Single Simulator Unit

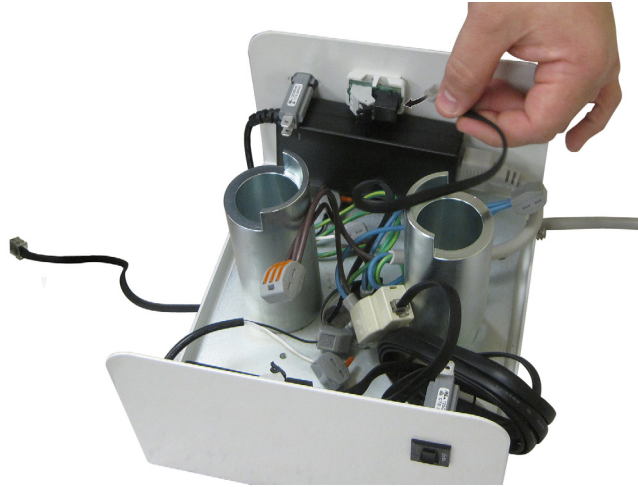


Dual Simulator Unit

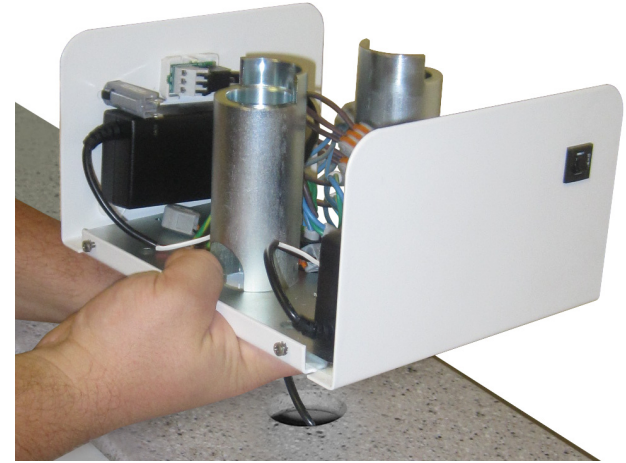
2. Install the power cables and cords:

1 Remove the data cable from the light base.

2 Feed the data cables up through the bottom of the light base, and connect the cables (one to each available adaptor board).



3 Feed the power cables and data cords through the hole in the bottom of the light base and into the bench top.



3. Use a ratchet and socket to install the bolts that secure the light base to the bench top.



Install the Flexarm to the Light Post



TIP It may be easier to lay the flexarm and light post on a flat surface while installing the flexarm.



NOTE The flexarm must be aligned with the light post.

1. Remove the flexarm and light post from the package.
2. Thread the light cable from flexarm into the light post.



3. Use the attached cable tie to pull the light cable through the bottom of the light post.



4. Install the flexarm into the light post.



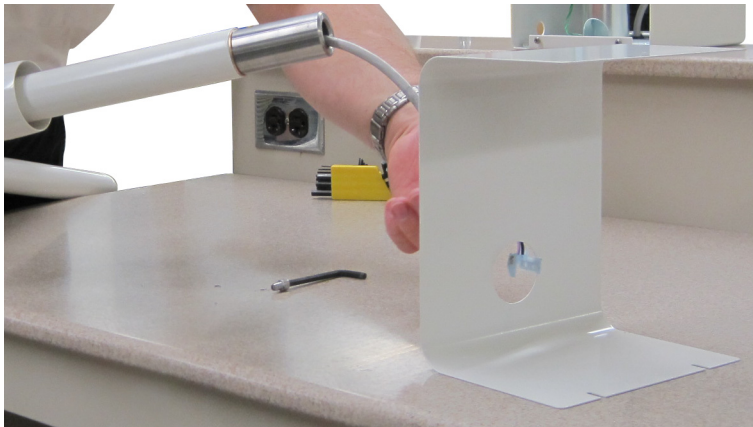
5. **Single Unit Only:** Use a 3/16" hex key to remove the screw at the base of the light post in order to pass the light post through the hole in the top of the base cover.



7. Reinstall the screw in the light arm. This screw will prevent the light post from being pulled out of the light base once installation is complete.
8. Apply a light coating of Lubriplate™ to the rotating portion of the light post.

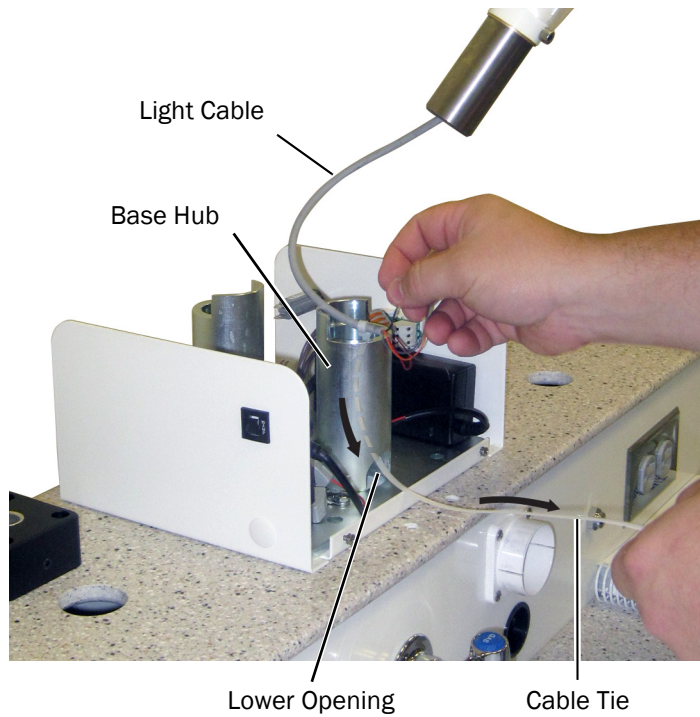


6. Insert the light cable through the hole in the light base cover and slide the cover up the light post.



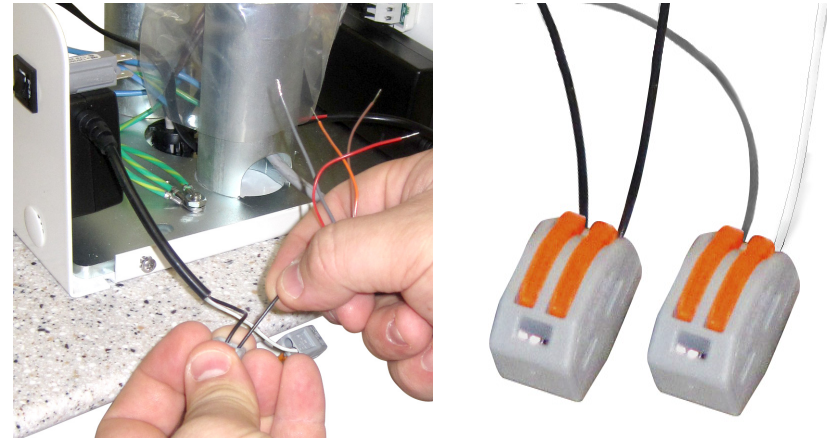
Mount the Light Post and Make Wire Connections

1. Feed the light cable through the lower opening in the base mounting hub using the attached cable tie.



2. Insert the light post/flexarm assembly into the base mounting hub.
3. Remove the cable tie from the light cable.

4. Use wire connectors to connect the light cable power wires to the transformer as follows:
 - Black to black
 - White to gray



5. Connect the colored light cable data wires to the adaptor board as follows:
 - Brown to BRN
 - Red to RED
 - Orange to ORN



Complete the Installation

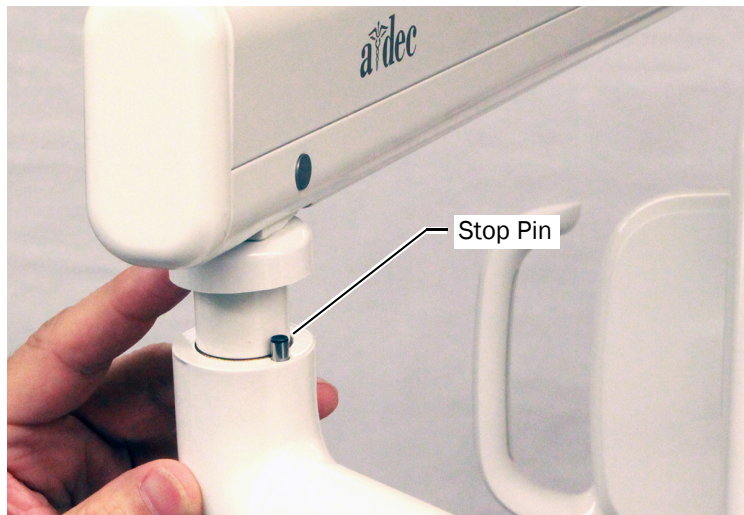


WARNING Shock hazard. When you remove or replace the covers, take care not to damage any wiring or tubing. Verify that the covers are secure after you replace them.

1. Reinstall the cover, and slide the trim ring down the light post.



2. Plug in the light.
3. Install the stop pin from the kit.



Test the Light

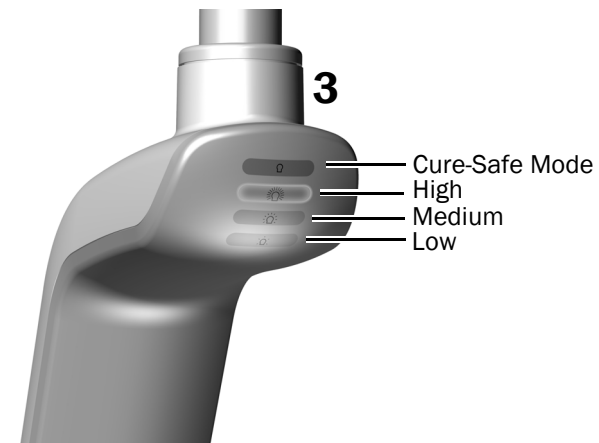
See the section for your system's configuration.

A-dec 578L

1. Turn on the power to the system.
2. Move your hand within 3" (76 mm) of the sensor to turn on the light.
3. Press the mode button to test the light in each mode.
4. For each mode, verify that the correct light on the driver housing cover is illuminated.



Touchless Sensor Shown



Next Step See "Test the Dental Light Using the Touchpad" on page 9.

A-dec 378L

1. Turn on the power to the system.
2. Test the light:
 - **Lights with touchpad functionality** – Move your hand within 3" (76 mm) of the touchless on/off sensor several times to verify the light switches between off and on.
 - **Lights without touchpad functionality** – Move your hand within 3" (76 mm) of the touchless on/off sensor and verify that the light cycles through high-low-off.
3. If it doesn't work properly, check the wiring connections.




Touchless Sensor Shown

Test the Dental Light Using the Touchpad

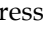


NOTE Touchpad symbols and icons are proprietary to A-dec, Inc.

1. To verify the light turns on and toggles between intensity modes (378L: High and composite/low; 578L: High, medium, and low plus cure-safe mode), repeatedly press and release . To turn off the light, press and hold the button.



NOTE When the 378L is in the composite/low mode or the 578L is in cure-safe mode, the light indicator on the touchpad flashes.

2. To disable the auto on/off feature, press and hold **p** and  at the same time for three seconds. One beep indicates that the auto on/off function is off. To re-enable, repeat this step. Three beeps indicate that the auto on/off feature is activated.



A-dec Simulator Touchpad

Regulatory Information and Warranty

For required regulatory information and the A-dec warranty, see the *Regulatory Information, Specifications, and Warranty* document (p/n 86.0221.00) available in the Resource Center at www.a-dec.com.



For quick access to this document online, scan, tap, or click this QR code, which points to a-dec.com/regulatory-guide.

All trademarks cited herein are the property of their respective owners.



A-dec Headquarters, 2601 Crestview Drive, Newberg, OR 97132 USA
Tel: 1.800.547.1883 Within USA/Canada, Tel: 1.503.538.7478 Outside USA/Canada
www.a-dec.com

A-dec, Inc. makes no warranty of any kind with regard to the content in this document including, but not limited to, the implied warranties of merchantability and fitness for a particular purpose.



86.0287.00 Rev G
Date of Issue 2022-11-30
Copyright 2022 A-dec, Inc.
All rights reserved.
IGgrphland9